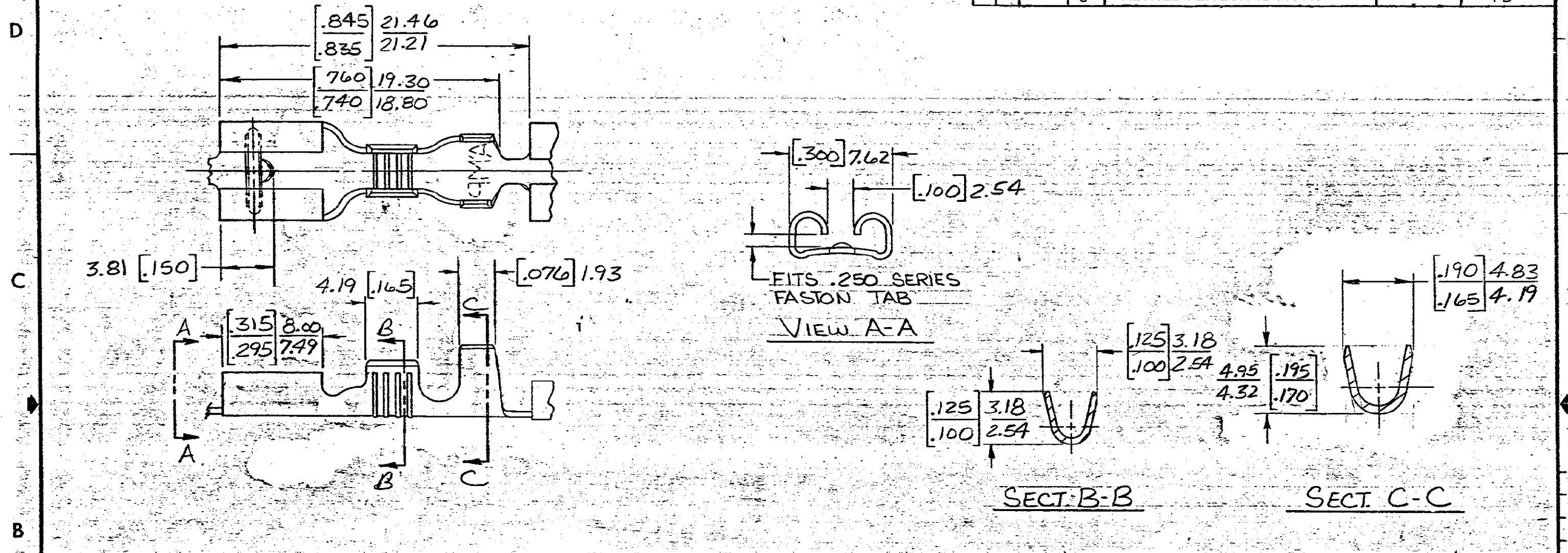


THIS DRAWING IS UNPUBLISHED. RELEASED FOR PUBLICATION . 19
 © COPYRIGHT BY

				1	LOC AF	DIST 50
REVISIONS						
P	F	ZONE	LTR	DESCRIPTION	DATE	APPROVED
			S	REVISED PER ECR-12-013445	24NOV12	PD



- DIMENSIONS IN BRACKETS ARE IN INCHES
 2-CONTINUOUS STRIP ON REELS

TIN	[.016] 0.41 STL.	[.090-.130] 2.29-3.30	[22-18] 0.3-0.8mm ²	[.032] 0.81	42510-4
NICKEL	[.016] 0.41 STL.	[.090-.130] 2.29-3.30	[22-18] 0.3-0.8mm ²	[.032] 0.81	42510-3
TIN	BRASS	[.090-.130] 2.29-3.30	[22-18] 0.3-0.8mm ²	[.032] 0.81	42510-2
NONE	BRASS	[.090-.130] 2.29-3.30	[22-18] 0.3-0.8mm ²	[.032] 0.81	42510-1
FINISH	MATERIAL	INSULATION RANGE	WIRE SIZE	[.001] 0.025 TAB THK	PART NO.

METRIC

UNLESS OTHERWISE SPECIFIED DIMENSIONS ARE IN INCHES. MM TOLERANCES ON DECIMALS ±.015] 0.38 ANGLES ±	CONTRACT NO
MATERIAL	DR <i>JR Rutt</i> 10/28/83
SEE ABOVE	CHK <i>G Yeller</i> 11/3/83
FINISH	APPD <i>C. Myers</i> 11-7-83
SEE ABOVE	APPD <i>V. K...</i> 11-16-83
	DSGN APPD
	OTHER APPD

TE TE Connectivity		
NAME 250 SERIES FASTON RECEPTACLE		
SIZE B	FSCM NO 00779	DRAWING NO 42510
SCALE	SHEET	